

Anhang

Zusätzliche Informationen wie diese Übersicht über die SketchUp-Tools sind zu finden unter (SketchUp 07)

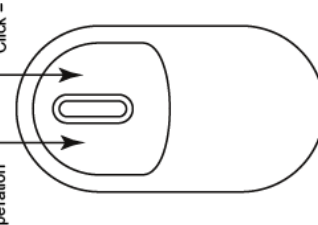
SketchUp Quick Reference Card

Copyright Google Inc. 2006

Middle Button (Wheel):
Click-Drag = Orbit
Shift-Click-Drag = Pan
Double-Click = Re-Center View
Scroll = Zoom

Left Button:
Click = Tool Operation

Right Button:
Click = Context Menu



| | | | | | | | | | | | | | | | | | | | | | | | | | | | | | | | |
|--|-------------------------|--|-----------------------|--|----------------------|--|-----------------------|--|---------------------|--|----------------------|--|-----------------------|--|-----------------------|--|-----------------------------|--|----------------------|--|-----------------------|--|-------------------|--|--------------|--|--------------|--|-------------|--|-------------|
| | New (Ctrl+N) | | Open (Ctrl+O) | | Save (Ctrl+S) | | Make Component | | Cut (Ctrl+X) | | Copy (Ctrl+C) | | Paste (Ctrl+V) | | Erase (Delete) | | Undo (Alt+Backspace) | | Redo (Ctrl+Y) | | Print (Ctrl+P) | | Model Info | | | | | | | | |
| | Get Current View | | Toggle Terrain | | Place Model | | Get Models | | Share Model | | Wireframe | | Hidden Line | | Shaded | | Shaded With Textures | | X-Ray | | Iso | | Top | | Front | | Right | | Back | | Left |

| | |
|--|---|
| | Paint Bucket Tool (B) Ctrl = Adjacent fill Shift = Replace Shift+Ctrl = Adjacent replace Alt = Sample material |
| | Line Tool (L) Shift = Lock to current axis Arrow keys = Toggle axis lock VCB: Number = Length |
| | Arc Tool (A) VCB: Number = Bulge VCB: Number+s = Segments VCB: Number+r = Radius |
| | Freehand Tool Shift = Draw 3D Polyline |
| | Push/Pull Tool (P) Ctrl = Toggle new starting face Double-Click = Repeat VCB: Number = Distance |
| | Follow Me Tool Alt = Use parameter of surface as path |
| | Offset Tool (F) Double-Click = Repeat VCB: Number = Length |
| | Dimension Tool |
| | Text Tool |
| | Section Tool |
| | Pan Tool (H) |
| | Zoom Window Tool |
| | Previous |
| | Walk Tool Shift = Move vertically Ctrl = Run Alt = Walk through entities VCB: Number = Eye height |
| | Select Tool (Spacebar) Ctrl = Add to selection set Shift = Toggle in/out of selection set Shift+Ctrl = Subtract from selection set Ctrl+A = Select all |
| | Eraser Tool (E) Ctrl = Hide Shift = Soften/Smooth Ctrl+Ctrl = Unsoften/Unsmooth |
| | Rectangle Tool (R) VCB: Length, Width |
| | Circle Tool (C) Shift = Lock to current orientation VCB: Number+s = Segments VCB: Number = Radius |
| | Polygon Tool Shift = Lock to current orientation VCB: Number+s = Segments VCB: Number = Radius |
| | Move Tool (M) Shift = Lock to current axis Arrow keys = Toggle axis lock Ctrl = Toggle copy Alt = Toggle auto-fold VCB: Number = Distance |
| | Rotate Tool (Q) Ctrl = Toggle copy VCB: Number = Angle VCB: Rise:Run = Slope |
| | Scale Tool (S) Shift = Scale uniformly Ctrl = Scale about center VCB: Number = Scale factor VCB: Number:w/ units = Length |
| | Tape Measure Tool (T) Ctrl = Toggle create construction geom Arrow keys = Toggle axis lock VCB: Number = Resize model |
| | Protractor Tool Ctrl = Toggle create construction lines |
| | Axes Tool |
| | Orbit Tool (O) Shift = Pan Ctrl = Free |
| | Zoom Tool (Z) Shift = Change field of view |
| | Zoom Extents Tool (Shift+Z) |
| | Position Camera Tool |
| | Look Around Tool VCB: Number = Eye height |

Abb. SketchUp Quick Reference Card (SketchUp 07)

Zur Tag-basierte Struktur eines KML-Files mit Namen und Attributen für spezielle Darstellungen.

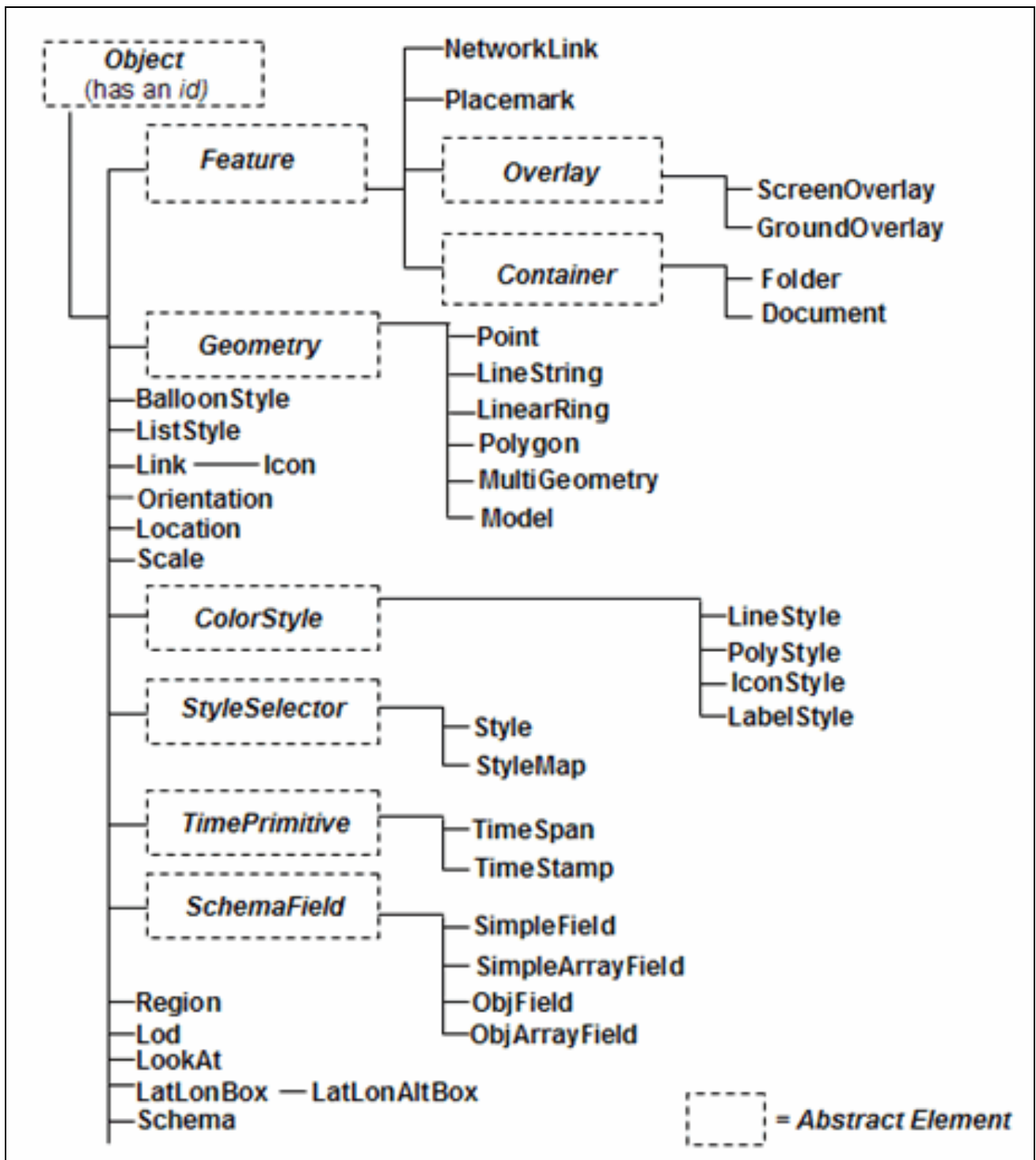


Abb. KML 2.1 Reference (KML 07)

```
C:\Programme\FWTools1.2.2>ogr2ogr
Usage: ogr2ogr [--help-general] [-skipfailures] [-append] [-update]
              [-select field_list] [-where restricted_where]
              [-sql <sql statement>]
              [-spat xmin ymin xmax ymax] [-preserve_fid] [-fid FID]
              [-a_srs srs_def] [-t_srs srs_def] [-s_srs srs_def]
              [-f format_name] [-overwrite] [[-dsco NAME=VALUE] ...]
              dst_datasource_name src_datasource_name
              [-lco NAME=VALUE] [-nln name] [-nlt type] [layer [layer ...]]

-f format_name: output file format name, possible values are:
  -f "ESRI Shapefile"
  -f "MapInfo File"
  -f "TIGER"
  -f "S57"
  -f "DGN"
  -f "Memory"
  -f "CSU"
  -f "GML"
  -f "KML"
  -f "Interlis 1"
  -f "Interlis 2"
  -f "SQLite"
  -f "ODBC"
  -f "PostgreSQL"
  -f "MySQL"
-append: Append to existing layer instead of creating new if it exists
-overwrite: delete the output layer and recreate it empty
-update: Open existing output datasource in update mode
-select field_list: Comma-delimited list of fields from input layer to
                  copy to the new layer (defaults to all)
-where restricted_where: Attribute query (like SQL WHERE)
-sql statement: Execute given SQL statement and save result.
-skipfailures: skip features or layers that fail to convert
-spat xmin ymin xmax ymax: spatial query extents
-dsco NAME=VALUE: Dataset creation option (format specific)
-lco NAME=VALUE: Layer creation option (format specific)
-nln name: Assign an alternate name to the new layer
-nlt type: Force a geometry type for new layer. One of NONE, GEOMETRY,
          POINT, LINESTRING, POLYGON, GEOMETRYCOLLECTION, MULTIPOINT, MULTILINE,
          MULTIPOLYGON, or MULTILINESTRING. Add "25D" for 3D layers.
          Default is type of source layer.
-a_srs srs_def: Assign an output SRS
-t_srs srs_def: Reproject/transform to this SRS on output
-s_srs srs_def: Override source SRS

Srs_def can be a full WKT definition (hard to escape properly),
or a well known definition (ie. EPSG:4326) or a file with a WKT
definition.
```

Abb. FWTool Befehlsaufbau und Erläuterungen

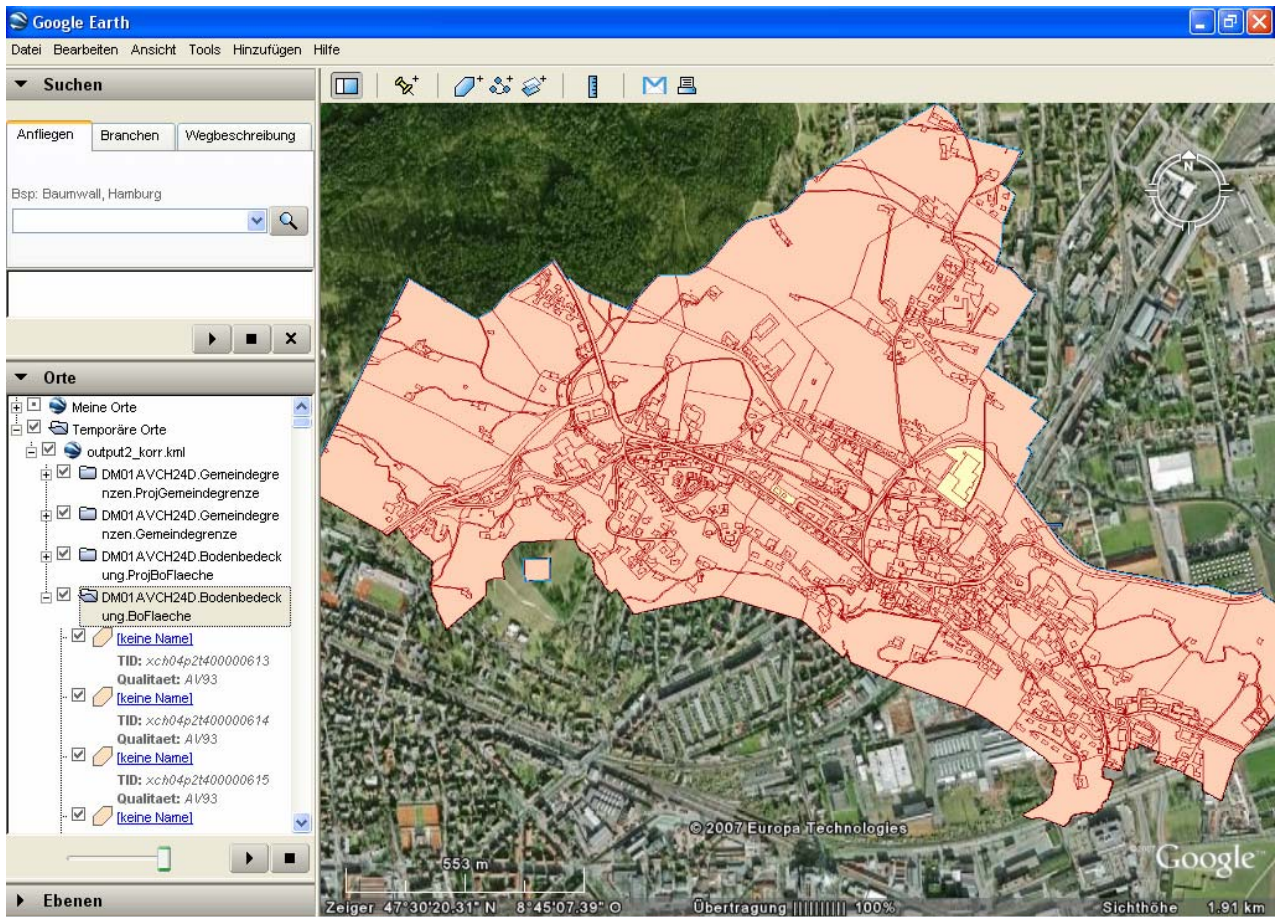


Abb. Testdatensatz transformiert mit FWTool

Bemerkung: der Interlis-Testdatensatz wurde in Lage und Form verändert. Deshalb ist die Visualisierung nicht in Deckung mit dem Orthophoto.

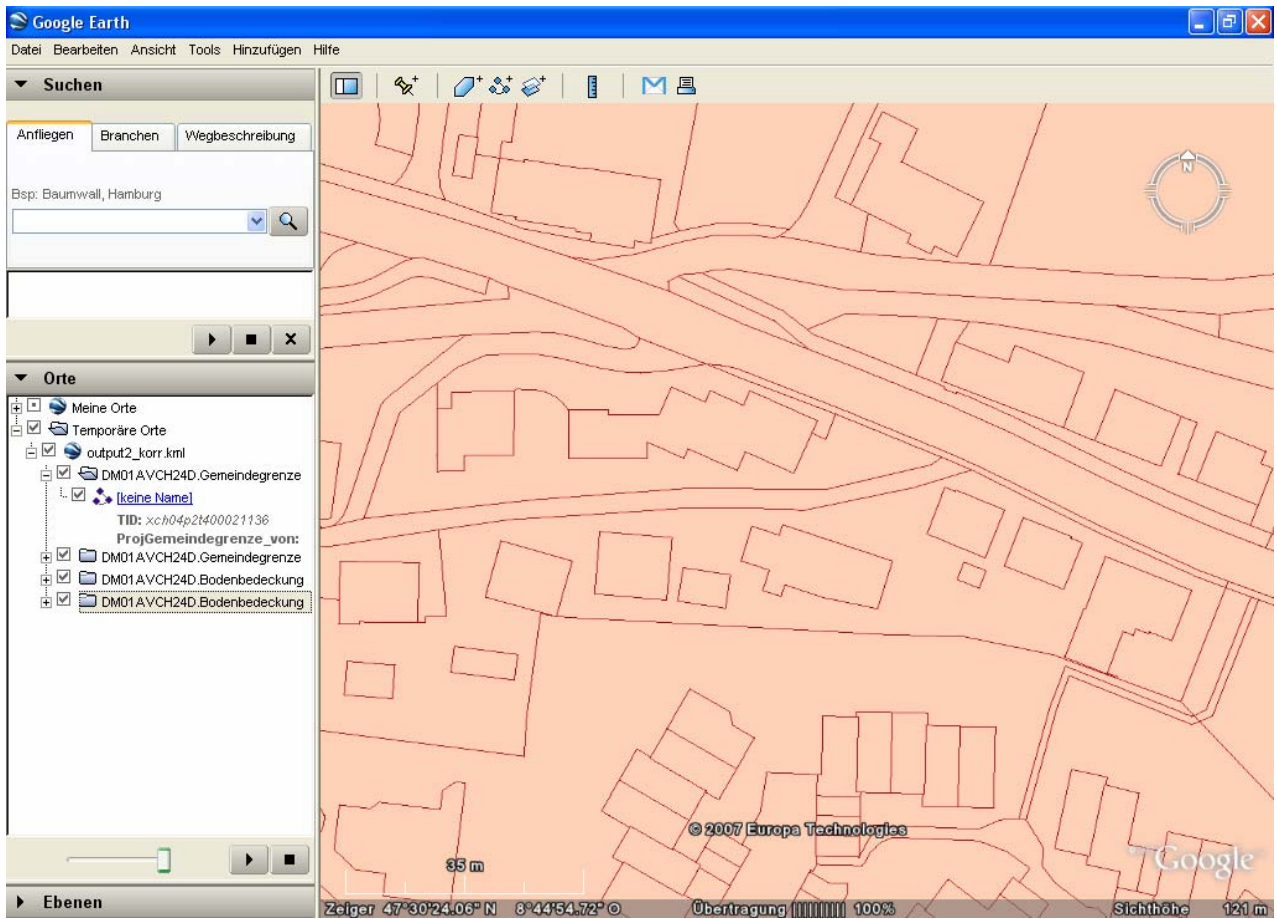


Abb. Visualisierung weiter hinein gezoomt