

Kulturlandschaftswandel

Rümlang · Opfikon · Kloten

1940 bis heute

Präsentation der Projektarbeit
7. Juli 2006

Felix Erzinger

Martin Ott

Michael Schmid


Matthias Wanner

Ablauf

- Vorgehen
 - Quellen
 - Kartenbearbeitung
 - Arbeitsteilung
- Ergebnisse
 - Illustration anhand eines Kartenausschnittes
 - Veranschaulichung mit Bildern

Quellen

- Karten
- Bilder
- Statistiken

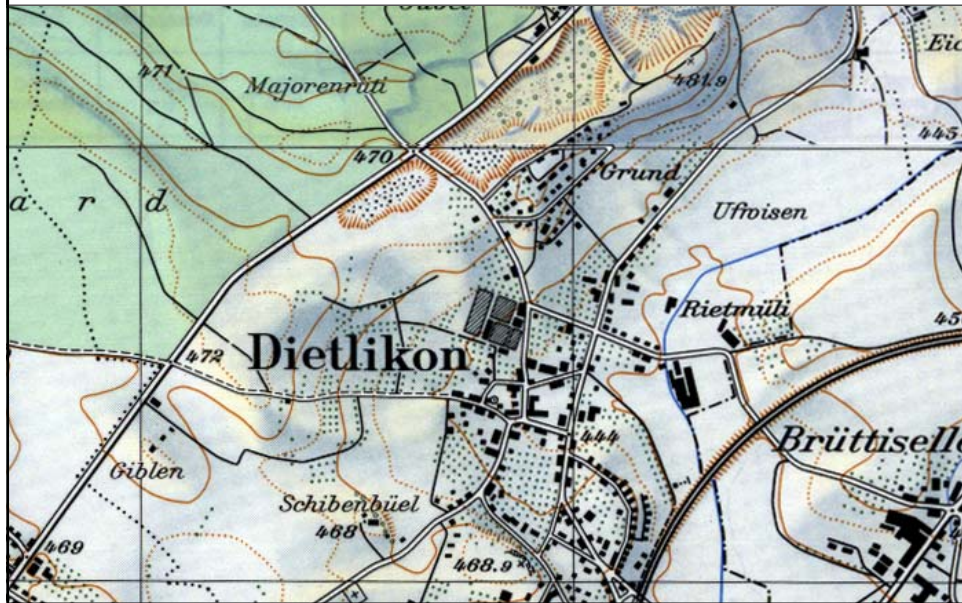


| in Prozent | |
|------------|--|
| 24.2 | |
| 18.2 | |
| 26.8 | |
| 19.6 | |
| 23.5 | |
| 24.8 | |
| 23.3 | |
| 29.9 | |
| 20.3 | |
| 22.3 | |
| 33.2 | |
| 17.3 | |
| 9.2 | |
| 23.5 | |
| 20.6 | |
| 25.8 | |
| 4 | |

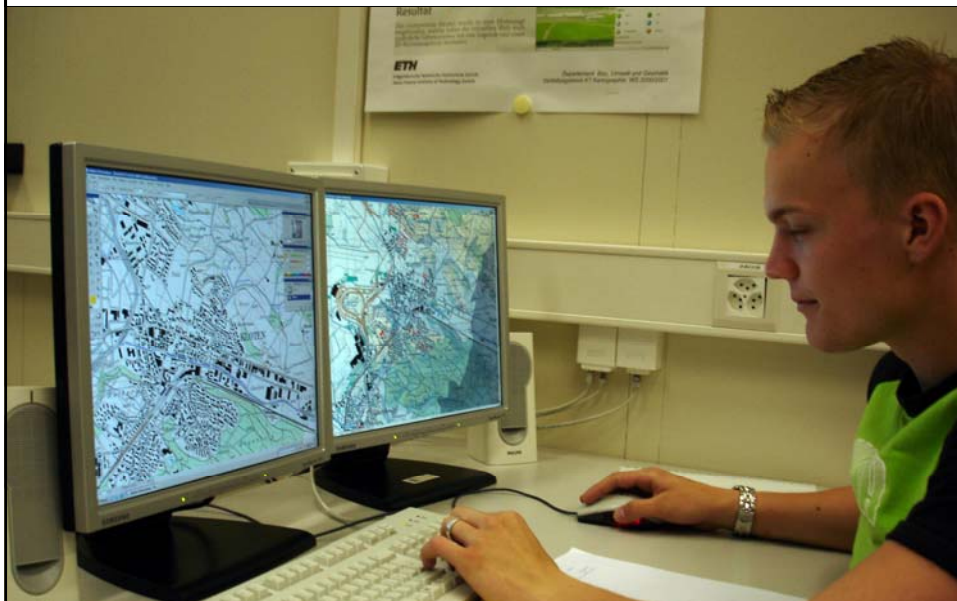
| Andelfingen | | Zürich | | Äffoltern | |
|-------------|---------------------|--------|---------|-----------|-------|
| 3 | Bonstetten | 959 | 74 321 | 46 870 | 15 |
| 4 | Hausen am Albis ... | 1 322 | 136 015 | 86 153 | - |
| 8 | Maschwanden | 515 | 46 943 | 28 281 | - |
| 10 | Obfelden | 1 321 | 75 804 | 48 851 | 5 570 |
| 12 | Rifferswil | 861 | 65 164 | 49 489 | - |



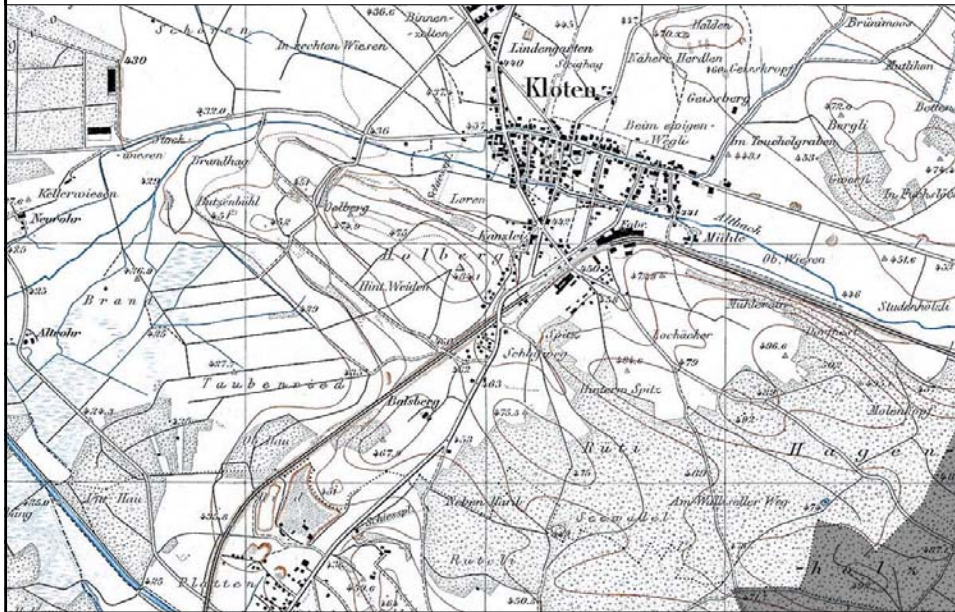
Karten zusammenfügen



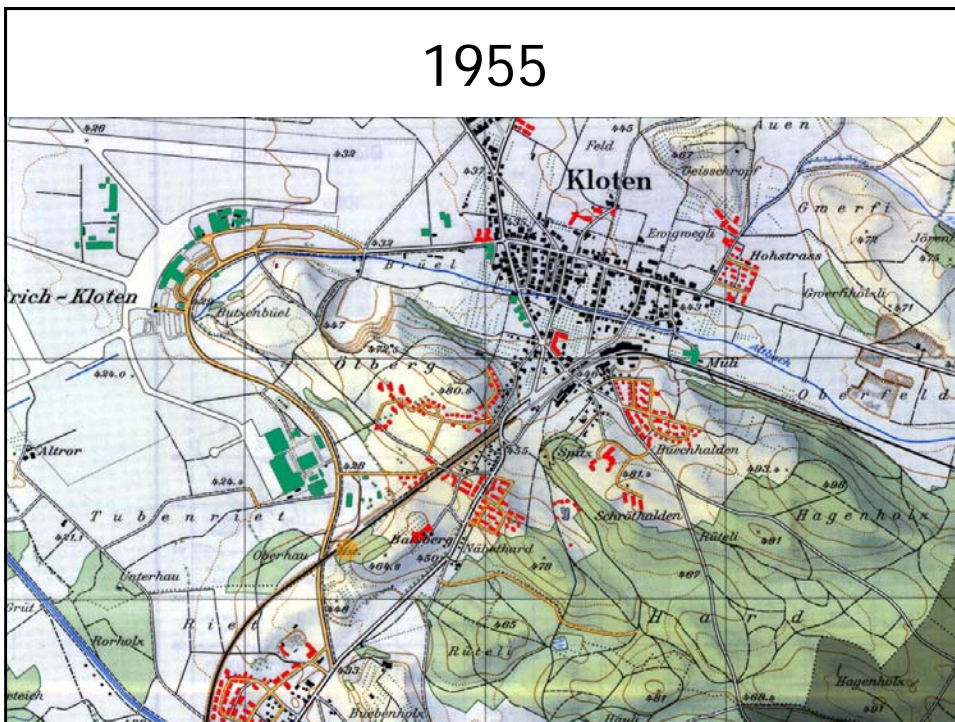
Karten bearbeiten



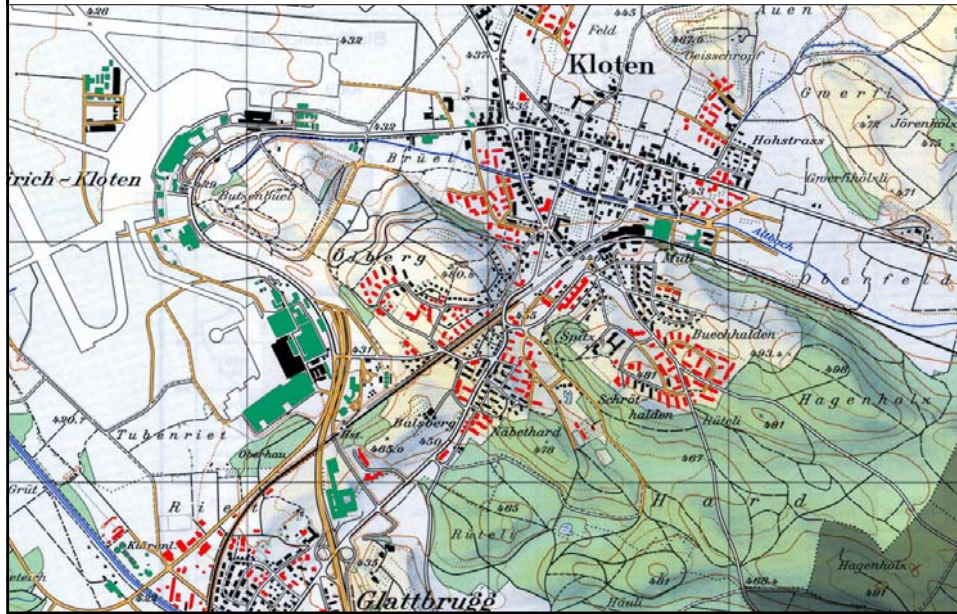
1940



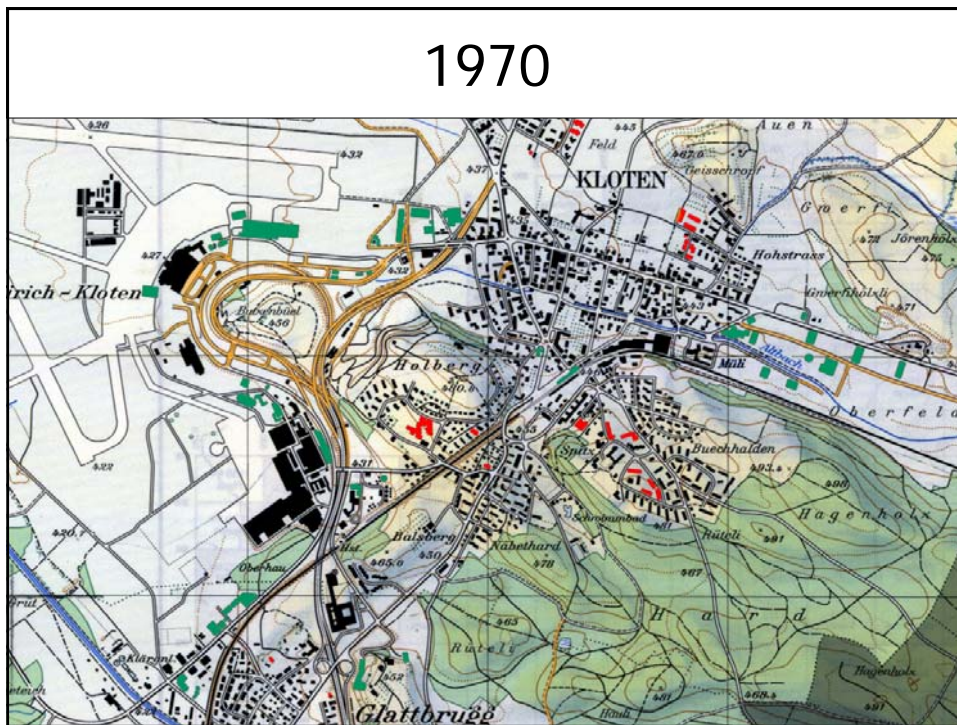
1955



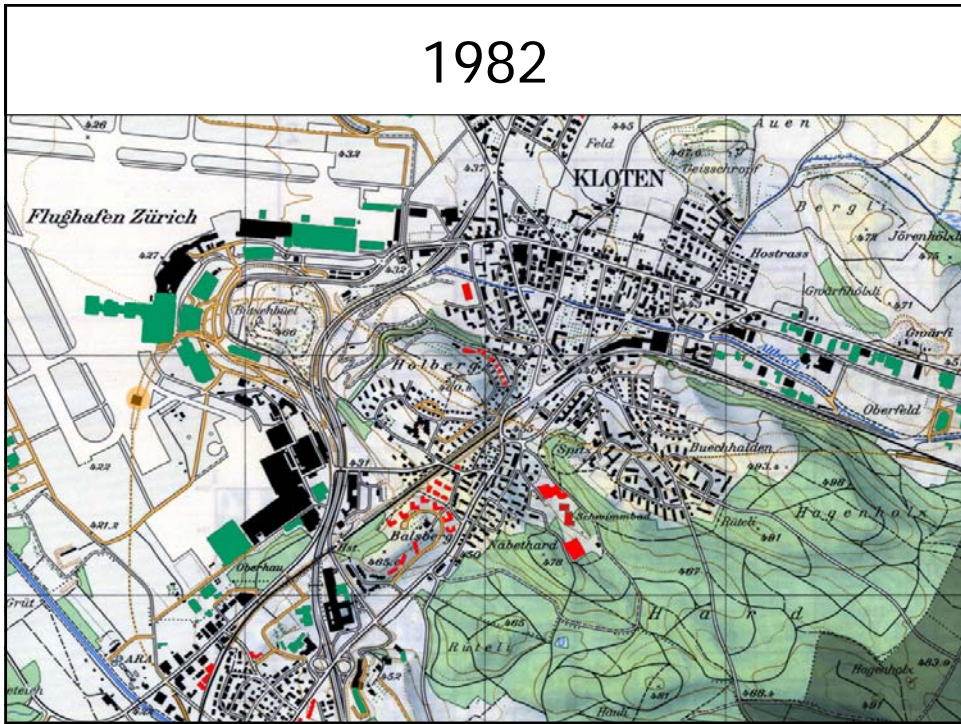
1962/66



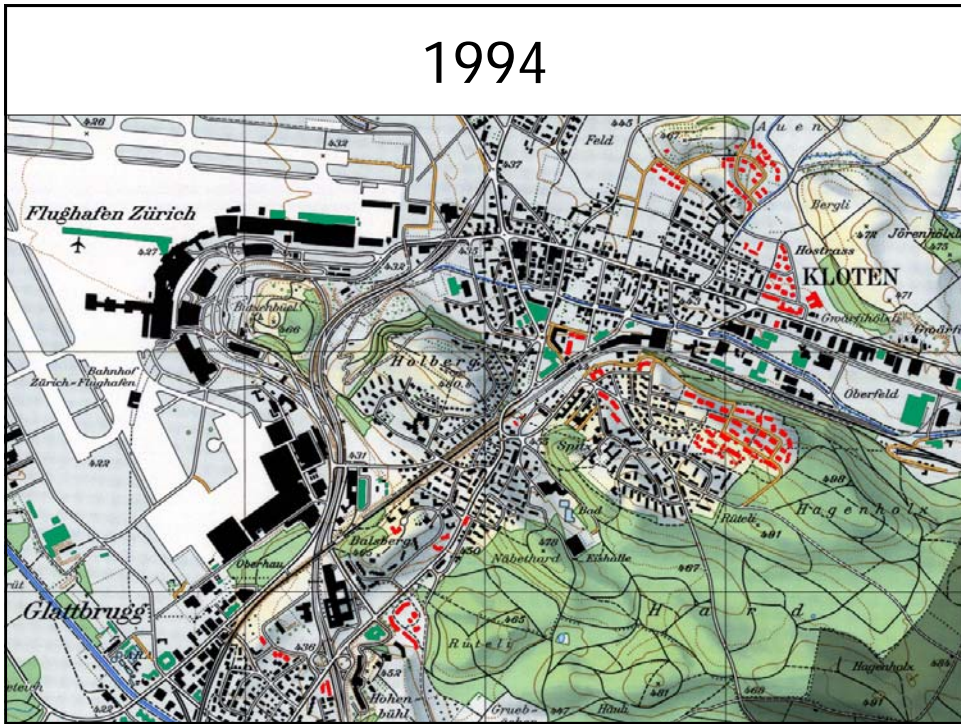
1970



1982



1994



2003

