

ETH Zurich, Campus Hoenggerberg

Enhancement of Esri's World Topographic Basemap
and Web Map Application development

Interdisciplinary Project Work

Goals

- Enhance Esri's World Topographic Basemap by enhancing the campus of ETH Hönggerberg
 - Integration of missing or incomplete information

- Create a web map application using ArcGIS Online¹ intended for students or professors of ETH
 - Purpose: Provide overview of the rooms and their equipment for the buildings of ETH Hönggerberg.

¹ Product of Esri

Proceeded Work

Basemap enhancement

New buildings added:
HWW, HWO, HCP, HGP, HIB

New parks and places added

Building labels added for $\leq 1:4'500$

Added labels for roads and places for
the scale $\leq 1:1'500$

Changed road classification for small
roads

Application development

Converted CAD data to features

Rectification of the features

Derived new room dataset

Joined CAD annotation with the
derived room dataset

Enhanced the attribute table of the
room dataset

Created web mapping application in
the WebApp Builder for ArcGIS Online

ArcGIS for Server used to host room
data

Topographic Basemap Comparison 1:5'000

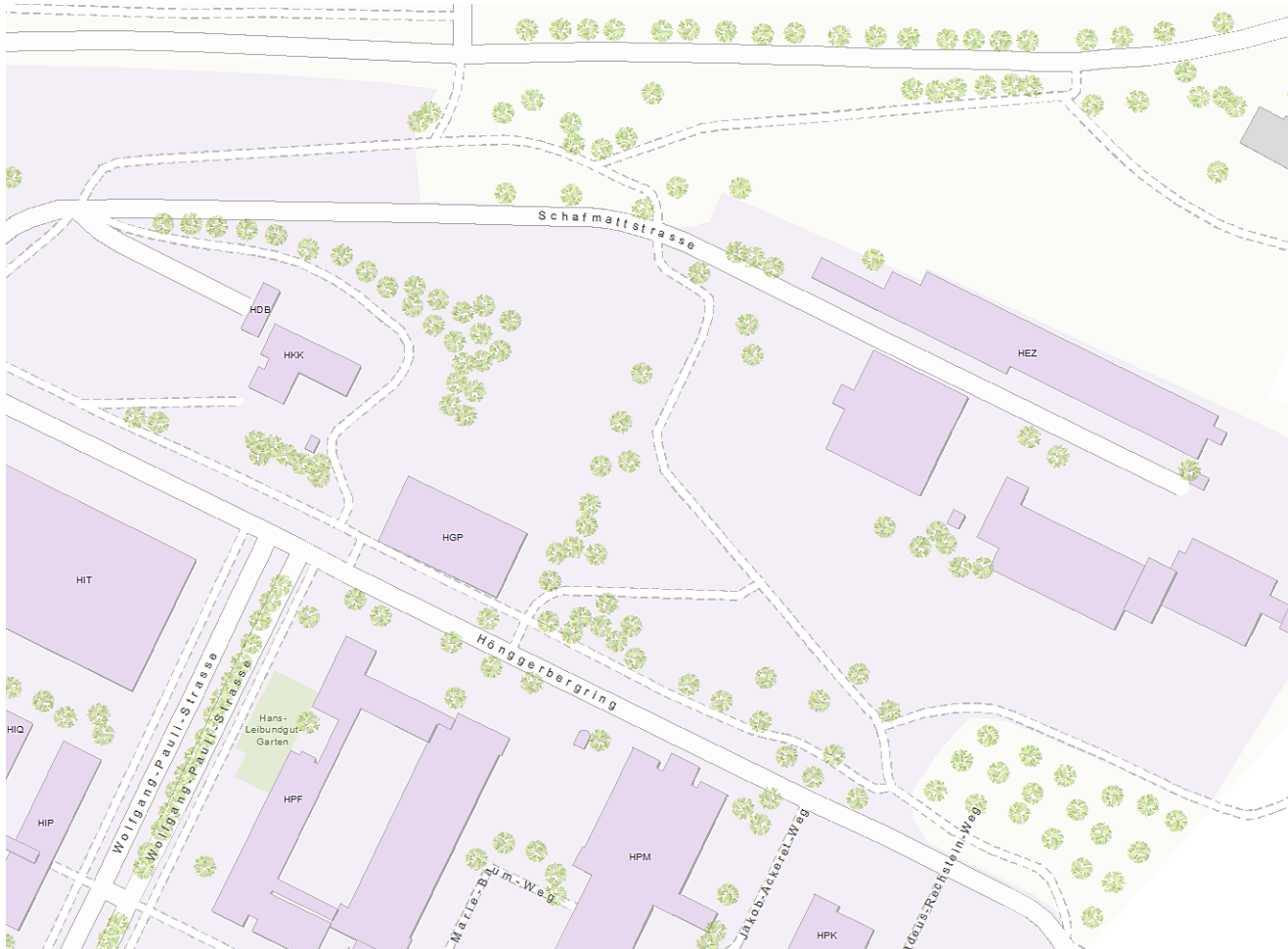
Original



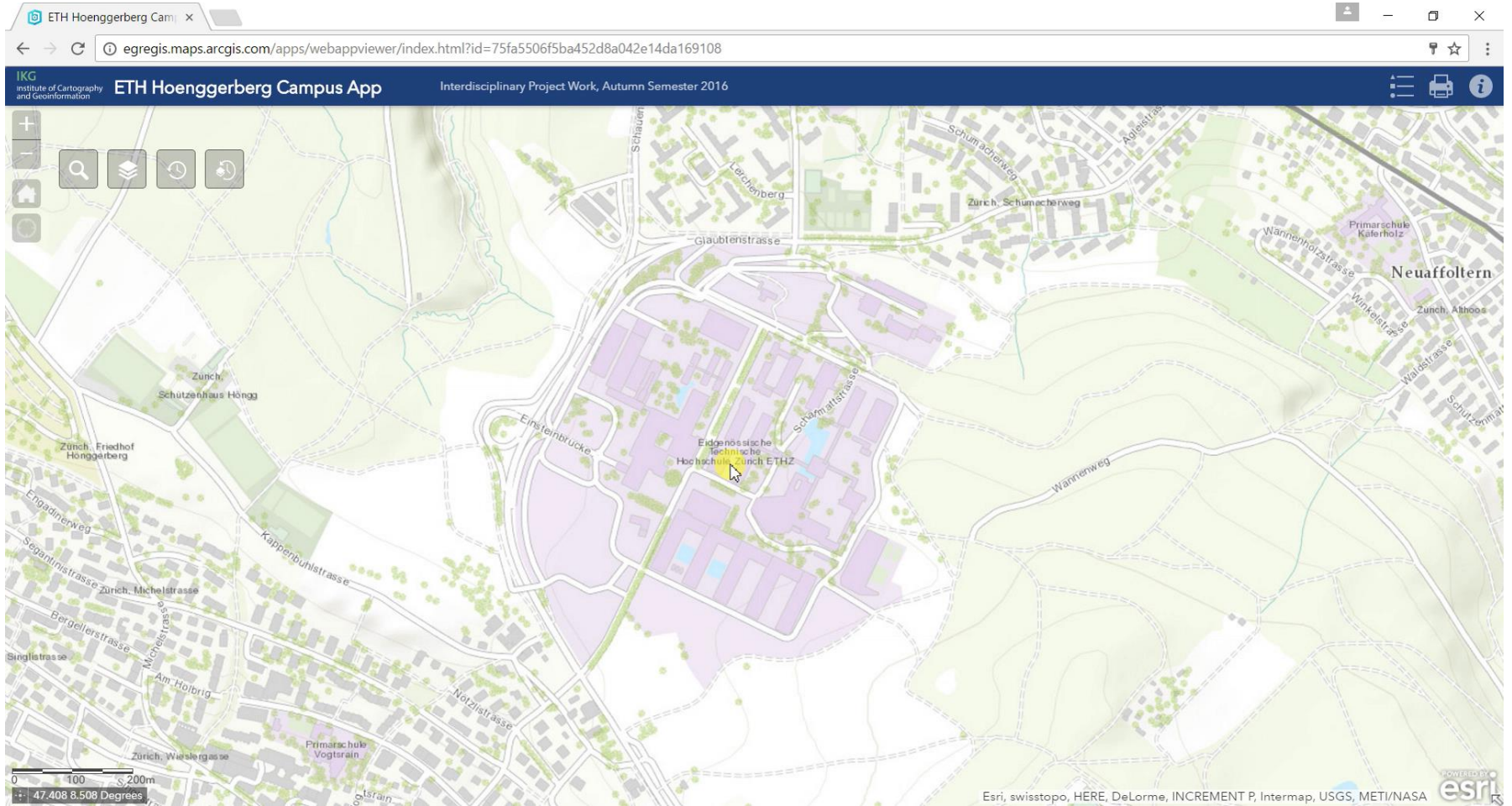
Enhanced



Enhanced Topographic Basemap 1:1'500



Demo application



Outlook

- Modify Widgets with JavaScript
 - Web AppBuilder for Developers
- Include room plans for other buildings
- Deploy the application on a ETH server